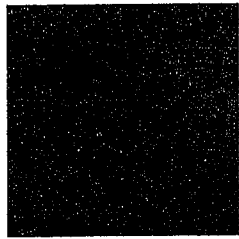


Form 71C

(June 2013)



The **ACT**[®]



2012 | 2013

In response to your request for Test Information Release materials, this booklet contains the test questions and conversion tables used in determining your ACT scores. Enclosed with this booklet is a report that lists each of your answers, shows whether your answer was correct, and, if your answer was not correct, gives the correct answer.

If you wish to order a photocopy of your answer document—including, if you took the Writing Test, a copy of your written essay—please use the order form on the inside back cover of this booklet.

ACT[®]

P.O. BOX 168
IOWA CITY, IA 52243-0168

©2013 by ACT, Inc. All rights reserved.
NOTE: This test material is the confidential property of ACT, Inc., and may not be copied, reproduced, sold, or otherwise transferred without the prior express written permission of ACT, Inc.



ENGLISH TEST

45 Minutes—75 Questions

DIRECTIONS: In the five passages that follow, certain words and phrases are underlined and numbered. In the right-hand column, you will find alternatives for the underlined part. In most cases, you are to choose the one that best expresses the idea, makes the statement appropriate for standard written English, or is worded most consistently with the style and tone of the passage as a whole. If you think the original version is best, choose "NO CHANGE." In some cases, you will find in the right-hand column a question about the underlined part. You are to choose the best answer to the question.

You will also find questions about a section of the passage, or about the passage as a whole. These questions do not refer to an underlined portion of the passage, but rather are identified by a number or numbers in a box.

For each question, choose the alternative you consider best and fill in the corresponding oval on your answer document. Read each passage through once before you begin to answer the questions that accompany it. For many of the questions, you must read several sentences beyond the question to determine the answer. Be sure that you have read far enough ahead each time you choose an alternative.

PASSAGE I

Picking the Tamed Wild Grape

The farmer, my new boss, handed
me a bucket pointing down a long row.
1

"Scuppernongs are this way," he said.
2
"Muscadines start two rows over."
2

From a distance, the field had looked contained
and orderly with its grapevines in row upon tidy row,
they were all the same breadth and height and spaced
3

the same distance apart. For instance, the scene was
4

more chaos, enchanting so. Vines tangled around each
5
other, heart-shaped leaves reaching in all directions.

1. A. NO CHANGE
B. and pointed
C. by pointing
D. pointing me
2. The writer would like to introduce the topic of the essay by closely connecting the opening paragraph to the setting that is described in the rest of the essay. Given that all the choices are true, which one best accomplishes the writer's goal?
E. NO CHANGE
G. It had taken me several weeks to find a summer job.
H. Scuppernongs and muscadines are available at certain times of the year but not others.
J. "Thank you," I said, noticing that it was a big bucket.
3. A. NO CHANGE
B. all of them were
C. they're
D. all
4. E. NO CHANGE
G. Under the circumstances,
H. Up close,
J. Or else,
5. A. NO CHANGE
B. chaotic, enchantingly so.
C. so enchantingly chaotically.
D. chaos so enchantment.

1 ■ ■ ■ ■ ■ ■ ■ ■ ■ ■ 1

Clusters of grapes drooped haphazardly. The outer portions of the vines had already been picked clean.

I could see other workers nearby.

Scuppernongs and muscadines—the words themselves so flavorful—growing wild in the southeastern United

States for centuries. Few farms cultivate it commercially.

The grapes have a faintly musky flavor. They can be twice as big as the grapes more commonly sold in grocery stores. Instead of being oblong or egg-shaped, they are almost perfectly spherical, something like marbles, only soft, and full of summer.

Typically, commercial grapes can be cut from the vine a cluster at a time, because all the fruit in a cluster ripens at the same time. A single cluster of scuppernongs or muscadines, however, may have two grapes ready to be picked immediately, four that will be ready the following day, and a half dozen that won't ripen until the following week. Harvesting is, therefore, labor-intensive.

6. Given that all the choices are true, which one continues to provide a contrast with the description in this paragraph's first sentence?
- F. NO CHANGE
 - G. had been neatly arranged on tables.
 - H. were available for purchase.
 - J. were ready to be picked.
7. Given that all the choices are true, which one most effectively focuses on the act of one person picking grapes?
- A. NO CHANGE
 - B. I stuck my arm shoulder-deep into the mass of leaves and felt a cluster there.
 - C. This farm has been part of the local landscape since before I was born.
 - D. In my family, there's an annual tradition of making grape jelly from locally harvested fruit.
8. F. NO CHANGE
- G. have grown
 - H. to grow
 - J. DELETE the underlined portion.
9. A. NO CHANGE
- B. there own
 - C. it now
 - D. them
10. Given that all the choices are true, which one provides information that is most relevant to the focus of the paragraph?
- F. NO CHANGE
 - G. The farm has been in the Johnson family for three generations.
 - H. The day was already hot, and it wasn't even noon yet.
 - J. I love all kinds of fruit, but grapes are my favorite.



Scuppernongs make a transition color-wise from light green to translucent yellow as they mature. But when the fruit, which grows in vineyards, is deep in the vine, so a vineyard worker can have a hard time seeing the color of the grapes. Following instructions from the farmer, I picked by feel instead, testing the skin for the rubbery texture that would indicate ripeness. After filling my bucket to the brim, I walked back to the shelter, the harvest accumulating there on long wooden tables. Resting a moment, I slipped a grape in my mouth, spat out the bitter seeds and skin, and let the sweet fruit settle on my tongue.

- 11. A. NO CHANGE
B. go through making a color change
C. change color
D. colorize
- 12. F. NO CHANGE
G. fruit, always a healthy choice,
H. fruit on the vine
J. fruit
- 13. A. NO CHANGE
B. whether
C. if
D. DELETE the underlined portion.
- 14. F. NO CHANGE
G. bucket, to the brim
H. bucket to the brim;
J. bucket to the brim:
- 15. A. NO CHANGE
B. would of spit
C. have spat
D. spitted

PASSAGE II

A Six-Month Stay in Space

When U.S. astronaut, Sunita Williams, left for her six-month stay at the International Space Station (ISS) in December 2006. The United States was not the only country tracking her voyage.

Because her father had been born in India, many citizens

of India also proudly followed Williams as she completed research about spaceflight.

- 16. F. NO CHANGE
G. astronaut, Sunita Williams
H. astronaut Sunita Williams,
J. astronaut Sunita Williams
- 17. A. NO CHANGE
B. 2006, the
C. 2006; the
D. 2006 the
- 18. Given that all the choices are true, which one gives the most relevant background information to explain the details presented in the remainder of the sentence?
F. NO CHANGE
G. Through articles published in local papers about Williams's accomplishments,
H. Although Williams had been born in the United States,
J. Admiring her work throughout her career,
- 19. Which choice most clearly suggests that Williams is not the only astronaut who has worked at the ISS?
A. NO CHANGE
B. contributed to ongoing
C. devoted herself to
D. worked on



[1] As a NASA flight engineer, Williams was assigned to conduct maintenance on the ISS, some of which needed to be performed outside the station. [2] Their spacewalk lasted over seven hours, during which they rerouted the temporary power system to a permanent one. [3] Before her first spacewalk in December 2006, Williams and her colleague, Bob Curbeam, spent hours preparing for the environment of space, which was to be sleeping in an airlock to help them adjust to a lack of air pressure. [4] Over the next three months, Williams conducted three more additional spacewalks to make repairs. [5] These brought her total spacewalk time to 29 hours 17 minutes, a record for women at that time. 23

Williams also conducted experiments and educational demonstrations for NASA; however, her most publicized event involved a personal goal. Having qualified for the spring 2007 Boston Marathon before her voyage; she decided to run the marathon (during the actual Boston race) on the ISS treadmill, which is used by the astronauts to fight the physical effects of microgravity. To hold the nearly weightless runner in place, a harness fastens around the runner's hips and shoulders and connect to the treadmill with bungee cords and clips. Williams completed her run in 4 hours 24 minutes, becoming the first person to participate in a marathon while in orbit.

- 20. F. NO CHANGE
G. of it needed
H. needed
J. need

- 21. A. NO CHANGE
B. that includes
C. including
D. they were

- 22. F. NO CHANGE
G. numerous
H. further
J. DELETE the underlined portion.

- 23. For the sake of the logic and coherence of this paragraph, Sentence 2 should be placed:
A. where it is now.
B. before Sentence 1.
C. after Sentence 3.
D. after Sentence 4.

- 24. F. NO CHANGE
G. voyage, she decided
H. voyage she decided
J. voyage, deciding

- 25. A. NO CHANGE
B. are connected
C. connected
D. connects