

雅思 A 类机经

超级小范围预测

针对 2015 年 05 月 09 日考试

小站教育 YOUNG 老师, 以十年磨一剑的功力, 专注托福、雅思机经的研发, 现隆重推出**雅思机经 (超级小范围)**的超级小范围预测, 从海量的雅思历年及最新考题题库中, 凭借独具的慧眼, 针对雅思听力、阅读、写作、口语, 做出准确预测, 形成史上最小范围的雅思机经预测体系。

针对 **5 月 9 日**雅思考试热门机经 每天更新汇总 [点击下载](#)

本套机经内容目录

1	听力机经预测	P02-03
2	写作机经预测	P04-12
3	口语机经预测	P13-69

针对本套机经【5月7日小站大课堂】5.9 雅思机经点题课
跟本套机经配合使用效果更佳！点击进入 [预约页面](#)

如果你是第一次下载小站雅思机经的小烤鸭

可以点击考试日期：[回顾小站雅思机经](#)

同时，我们自信的给你展示：[上一场小站雅思机经命中率](#)

2015.05.09 听力机经预测

对雅思考试时间与机经发布时间做到心中有数，请点击查看 [雅思机经发布时间表](#)

听力机经使用攻略：

雅思听力考试中，一般都会有部分旧题（在过去曾经考过的，每场考试都以 V001 等形式作为编号），一部分新题共同组成。本机经主要针对旧题部分，通过规律的摸索，做出准确地预测。

近期考题回顾：

2015 年 04 月 30 日

Section 1: 旧题 130314 咨询一个电影俱乐部的信息 **（四级命中）**

Section 2: 新题 咨询度假村的一些情况

Section 3: 旧题 黑猩猩的研究

Section 4: 旧题 130829 人类模仿生物进行仿生设计的讲座 **（五级命中）**

4 月 30 日雅思考试听力真题回忆汇总：[点击查看](#)

本场雅思考试机经配套听力题库：[点击下载](#)

一级命中（高命中必看！）

V100211 S4; 100220 s3; 100320 S2, S3, S4; V100206 S1, S2; V100327 S1, S4; V100415 S2, S4; V100424 S1; V100508 S1; V100515 S1; V100617 S1; V100619 S1, S2; V100710 S1; V100717 S2; V100731 S4; V100828 S1, S3; V100911 S1, S3; V100916 S2, S4; V100925 S1; V101023 S2; V100109 S1, S2; V100114 S1, S4; V100123 S1, S2; V100130 S1, S3; V100227 S4; V100626 S2; V100805 S4; V100814 S1; V100821 S2, S4; V101104 S3, S4; V101104 S3, S4; V101106 S1, S3; V101120 S3; V101127 S2,S3; V101204 S3; V101211 S1; V101218 S3; V100915; V110917; V110924; V111008; V111020 S1 S2 S4; V111020 S1 S2 S4; V111022 S2, S3, S4; V111029 S1 S3 S4; V111105 S2 S3; V111117 S1 S2 S4; V111119 S2 S4; V111126 S1 S2 S3; V111203; V111210 S2; V111217; V120915 S2,S3,S4; V130727 S3, S4; V130615 S1 S2 S3 S4; V130718 S3, S4; 09136 S3

二级命中

V09117 S3; V09118 S2; V09119 S2 S3 S4; V09120 S1 S3 S4; V09121 S1; V09122 S3, S4; V09123; V09124 S1 S3 S4; V09125 S3; V09126 S1 S3; V09127; V09128 S4; V09129 S2; V09130 S4; V09131 S3 S4; V09132 S1 S4; V 09133 S1, S3, S4; V09134 S1 S4; V09135 S2 S4; V09136 S3; V110108 S1 S2 S4; V110115 S2 S3 S4; V110122 S1 S4; V110127 S1 S4; V110212 S1 S2; V110217 S2, S3; V110219 S2; V110226 S2 S4; V110305 S1 S4; V110312 S1 S2 S4; V110319 S4; V110402 S3 S4; V110416 S2 S4; V110428 S2; V110430 S2 S4; V110507 S1 S3; V110514 S1; V110519 S2 S3 S4; V110528 S2; V110604 S1 S3; V110611; V110623; V 110625 S2 S3 S4; V110709 S2 S4; V110716 S2 S3 S4; V110728; V110730 S3 S4; V110813 S3 S4; V110820 S2 S4; V110825 S2 S3 S4; V110827 S1 S2; V110903; V120218 S1 ; V120421 S1; V130727 S3 ; V101014 S3

对雅思考试时间与机经发布时间做到心中有数，[请点击查看 雅思机经发布时间表](#)

三级命中

V08141; V08142; V08143; V08144; V08145; V08146; V08147; V08148; 08101; V08102; V08103; V08103; 08104; 08105; 08106; V08107; V08108; V08109; V08110; V08111; V08112; V08113; V08114; V08115; V08116; V08117; V08118; V08119; V08120; V08121; V08122 S2 S4; V08123; V08124; V08125; V08126; V08127; V08128; V08129; V08130; V08131; V08132; V08133; V08134; V08135; V08136 S1 S3; V08137; V08138; V08139; V08140; V120107 S3; V120112 S3; V120114 S2; V120204 S1,S3,S4; V120209 S2, S4; V120218 S1, S4; V120308 S3; V120616 S1, S3; V120630 S4; V120707 S1, S3; V120712 S1, S3; V120721 S1, S2; V120728 S1; V120804 S2; V09108 S1, S4; V09109 S1, S4; V09104S1,S2; V09105 S1; V09106S2,S4; V121103 S2 S3 S4; V120225 S1 S3 S4; V120614 S1 S2 S3; V121215 S2; V121208 S4; V121117 S3

四级命中

V131130 S1, S2; V131207 S2, S4; V131212 S2, S3, S4; V131214 S2, S3; V131221 S1, S2, S4; V130202 S3; V130323 S2, S3; V130413 S1; S3; V130418 S1, S2, S3, S4; V130427 S2; V130511 S1, S2; V130516 S1, S2, S3; V130518 S3, S4; V09137 S1 S3; V09138 S2; V09139 S1 S3 S4; V09140 S1 S2; V09141; V09142 S2 S3 S4; V09143 S1 S3; V09144; V09145 S2 S3 S4; V09146 S1 S2; V09147 S1 S2; V09148 S3 S4, V09101 S2 S4; V09102 S3 S4; V09103 S1 S2; V09104 S1 S4; V09105 S1 S2; V09106 S1 S2 S4; V09107 S3 S4; V09108 S1 S4; V09109 S1 S4; V09110 S1 S2; V09111 S1 S2 S3; V09113 S3 S4; V09115 S1 S3; V130214 S1, S2, S3, S4; V130223 S2, S4; V130309 S2, S4; V130314 S2, S3, S4; V130105 S1, S3; V130110 S1, S2, S3, S4; V130112 S4; V130119 S1, S2; V121124 S2

五级命中

V 130824 S2, S4; S130829 S3; V130907 S1, S4; V130912 S3, S4; V130921 S1, S2, S3; V130928 S1, S3, S4; V131010 S1, S2, S3, S4; V131012 S1, S4; S1301019 S1, S3; 131109 S1; V131116 S3, S4; V131121 S2, S3; V130525 S1, S2, S4; V130606 S1, S2; V130608 S1, S3; V130622 S1, S2, S3, S4; V130706 S2, S3,S4; V130803 S1, S2; V130817 S1, S2;V120310 S1, S2; V120317 S1, S4; V120331 S2; V120414 S3, S4; V120421 S1, S3; V120510 S1, S3, S4; S120512 S1, S3; V120609 S2, S4; V120614 S2, S3; V130105 S3

场景预测

Section 1 & Section 2 的重点场景（生活类）：租房、图书馆、旅游活动报名、加入会员等，Section 1 注意数字、号码、人名、地名、时间；Section 2 注意地图。

Section 3 & Section 4 的重点场景（学术类）：独白介绍某事物、学术讨论、作业讨论，注意掌握机经中陌生的词汇。

2015.05.09 写作机经预测

对雅思考试时间与机经发布时间做到心中有数，[请点击查看 雅思机经发布时间表](#)

写作机经使用攻略：

雅思写作考试中，写作的话题类型会按照一定的规律出现，本机经主要针对话题类型分布，通过规律的摸索，做出准确地话题类型预测。

4月30日雅思考试写作真题回忆汇总：[点击查看](#)

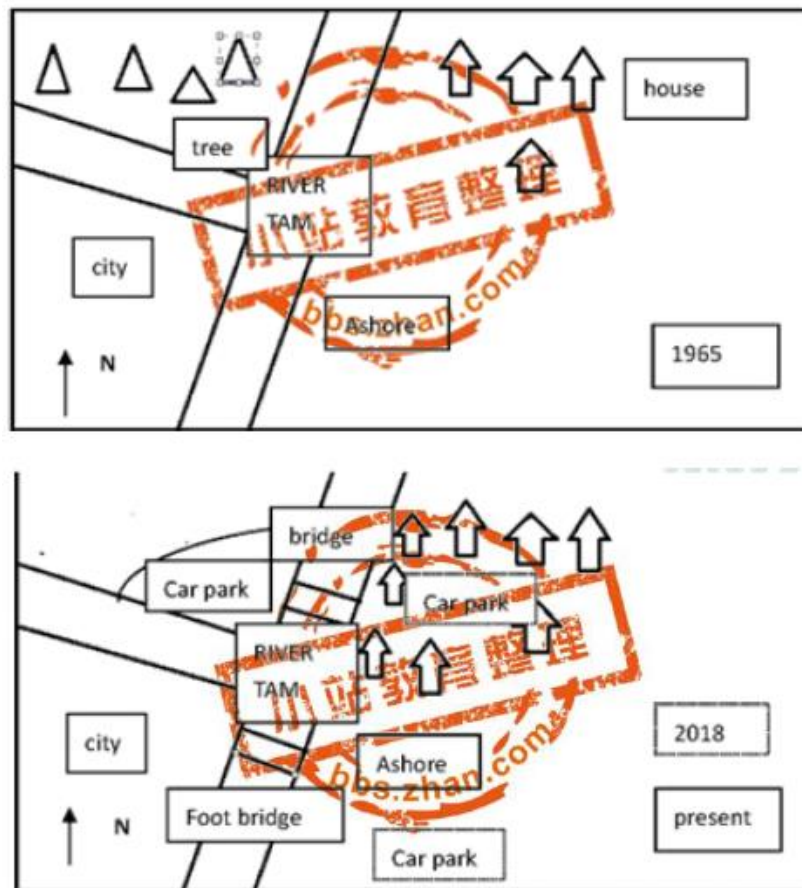
近期考题回顾：

小作文

2015年4月30日：Map（一级命中）

Describe the change of a city from 1965 to 2018.

The map describes the change of a city from 1965 to 2018.



The two pictures show the layout of a city from 1965 to 2015 and its future design in 2018.

There was a north-to-south Tam River in the city, with a branch flowing from the west to the east. In 1965, in the northwest corner of the city, some trees were surrounded by the river, meanwhile, some houses were located on the ashore which was in the opposite of the river.

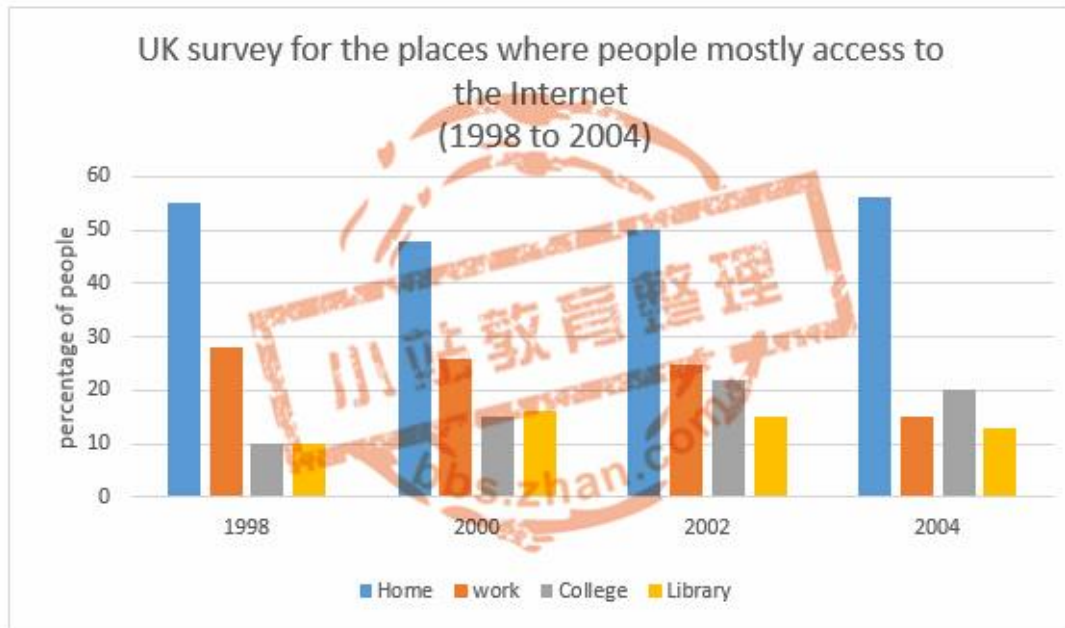
Now, a car park has replaced the trees area and the number of houses has doubled. Besides, a new bridge has been built across Tam River and a new foot bridge, just under the new bridge, has been constructed over the river. In addition, two car parks will be built in 2008. One will

对雅思考试时间与机经发布时间做到心中有数，[请点击查看 雅思机经发布时间表](#)

be located in the middle of residential district and the other one will be built in the south of the city.

2015年4月25日：Bar (二级命中)

The bar chart compares the changes in the places where people used to surf the Internet in the years 1998, 2000, 2002, and 2004.



The bar chart compares the changes in the places where people used to surf the Internet in the years 1998, 2000, 2002, and 2004.

It can be seen from the chart that people were more likely to surf the Internet at home and in their working places. The percentage of people who get access to the Internet experienced its ups and downs. After it fell to about 46% in 2000, it began to rise gradually and reached a peak of about 55% in 2004. The gap between people who spent their online time at home and in their working place widened. People enjoyed less their online time in their working places, which its percentage decreased steadily and fell to its bottom of 10% in 2004.

Conversely, the numbers people who chose to spend their online time in colleges and libraries did not change dramatically. From 1998 to 2002, the size of people who enjoyed their online time in college was nearly the same and stood at 20%. But it went down to approximately 18% in 2004. As for those who preferred to get to the Internet in library, the percentage fluctuated between 1998 and 2004. In 1998, library had the fewest Internet users, which was only 10%. After that, the percentage fluctuated between 10% and 15%.

2015年4月18日：Table (一级命中)

对雅思考试时间与机经发布时间做到心中有数，请点击查看 [雅思机经发布时间表](#)